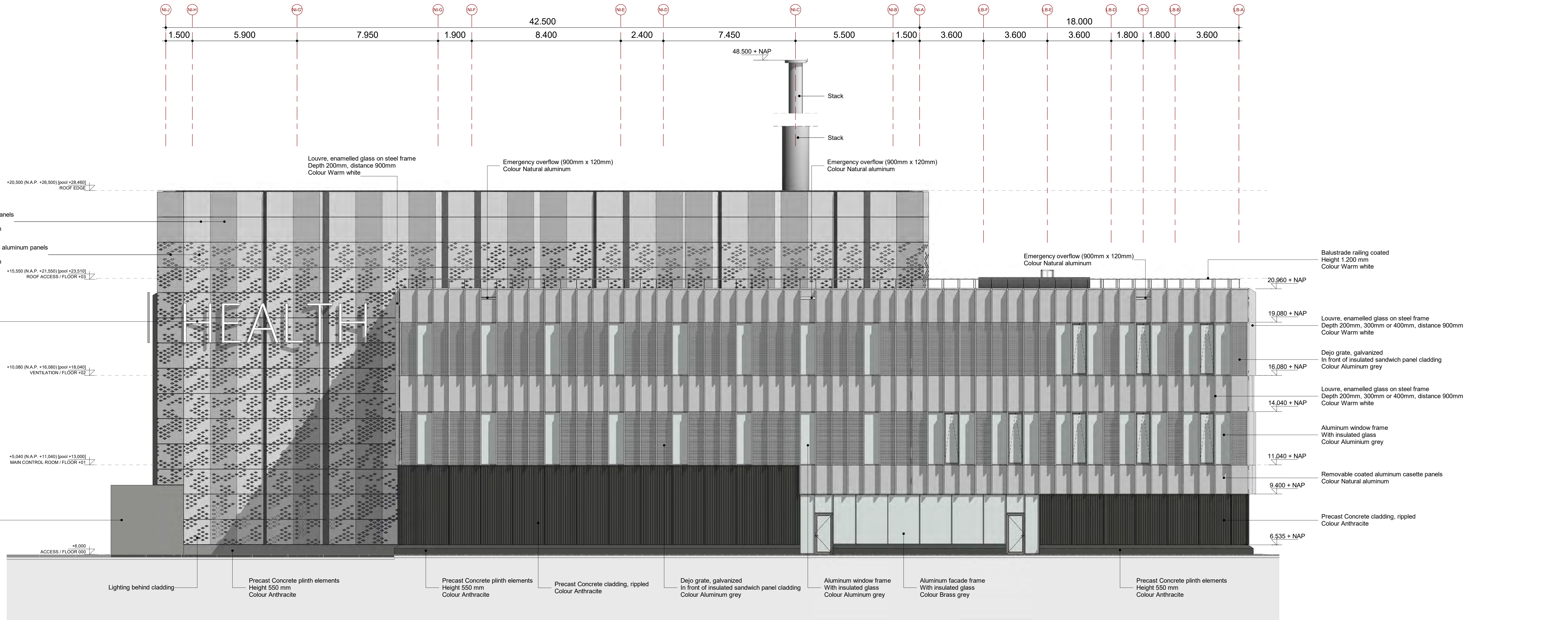
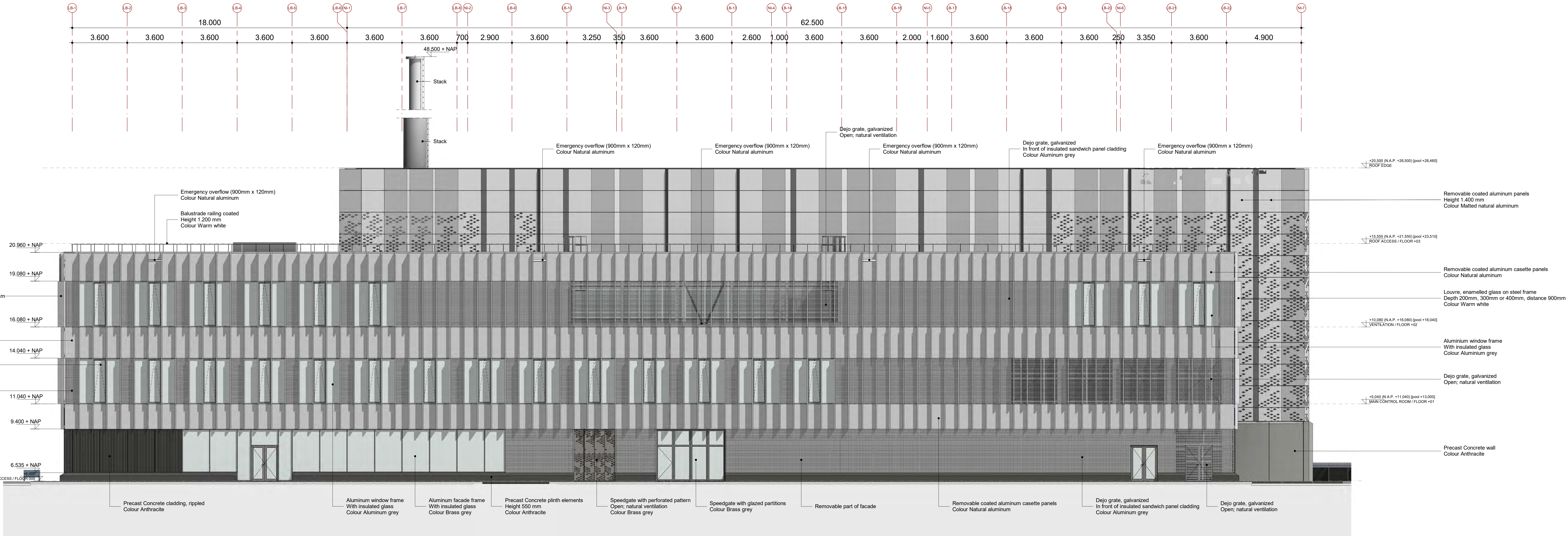


© 2022 ICHOS. All rights reserved. ICHOS is a registered trademark of ICHOS. The information contained herein is confidential and proprietary to ICHOS. No part of this document may be reproduced, stored in a retrieval system, or transmitted, in any form or by any means, electronic, mechanical, photocopying, recording, or by any information storage or retrieval system, without prior written permission from ICHOS. The information contained herein is confidential and proprietary to ICHOS. No part of this document may be reproduced, stored in a retrieval system, or transmitted, in any form or by any means, electronic, mechanical, photocopying, recording, or by any information storage or retrieval system, without prior written permission from ICHOS.



East Elevation



North Elevation



#### GENERAL NOTES:

- All dimensions (measurements) in millimeters (mm) unless otherwise indicated.
- Height dimensions relative to Finished Ground floor Level (FGL).
- FGL = +0.000 = **+6.000 N.A.P.** (N.A.P. = Normal Amsterdam's Piel = Reference level).
- Functional concept and occupancy of the building: see PLS-7210-2BRDIC-004-A, paragraph 1.3.
- Building function regulations (Bouwbesluit) and area calculations: see PLS-7210-2BRDIC-004-A, chapter 2.
- For component size and dimensions of main structure and geotechnical advice: see relevant reports / construction drawings. Permissible floor load: see construction documents.
- All roofs should have sufficient overflows or emergency drainage according to manufacturer's specifications.
- Pest protection: The external separation construction has no openings wider than 0.01 m (1 cm).
- Watermoisture-resistance of sanitary rooms: see PLS-7210-2BRDIC-004-A, paragraph 3.1.
- Specification glazing of window frames: see PLS-7210-2BRDIC-004-A, paragraph 3.2.
- Occupancy per room and emergency capacity: see PLS-7210-2BRDIC-004-A, paragraph 3.4.
- Bicycle parking space: see PLS-7210-2BRDIC-004-A, paragraph 3.5.
- BENG calculations: see PLS-7210-2BRDIC-004-A, paragraph 3.6.
- Environmental performance calculation: see PLS-7210-2BRDIC-004-A, paragraph 3.7.
- Installation specifications: see PLS-7210-2BRDIC-004-A, paragraph 3.8.
- Emergency, escape route lighting and fire compartments: see fire safety drawings and PLS-7210-2BRDIC-004-A, paragraph 3.9.
- Checklist for safe maintenance: see PLS-7210-2BRDIC-004-A, paragraph 3.10.
- Accessible shafts will be equipped with grid floors.
- Double doors have one door with a clear opening width of at least 850 mm.
- Specifications on loadslab and handrails: see PLS-7210-2BRDIC-004-A, paragraph 3.11.
- Explanation special residential area's: see PLS-7210-2BRDIC-004-A, paragraph 3.12.
- Calculation thermal bridges: see PLS-7210-2BRDIC-004-A, paragraph 3.13.
- All crawl spaces with natural ventilation. Crawl spaces with installations are accessible via floor hatch.
- Operable tilted windows: see PLS-7210-2BRDIC-004-A, paragraph 4.1.
- Thermal boundary: see PLS-7210-2BRDIC-004-A, paragraph 4.2.
- Explanation & detail's accessibility sector: see PLS-7210-2BRDIC-004-A, paragraph 2.4 & chapter 5.

ICN_Schedule Level Heights - Building NI				
Number	Level Name	Piel (PSL)	NAP	Bottom Piel
N+4	ROOF EDGE	+20.550	+20.550	+20.450
N+3	ROOF ACCESS / FLOOR +03	+15.550	+15.550	+15.510
N+2	VENTILATION / FLOOR +02	+10.080	+10.080	+10.040
N+0	ACCESS / FLOOR 000	+4.000	+4.000	+3.960
N+1	MAIN CONTROL ROOM / FLOOR +01	+5.040	+11.040	+10.000
N+0	MEZZANINE / FLOOR +0A	-2.000	+3.000	+1.960
NAP	OUTDOOR SPACE DATUM	0.000	0.000	+1.960
N-1	INSTRUMENTATION AND CONTROL / FLOOR 01	-6.000	-6.000	+1.960
N-0	BOTTOM POOL	-7.000	-7.000	+1.960
N+2	MEZZANINE / FLOOR +02A	-4.360	-3.360	+1.400
N+2	PUMP LEVEL / FLOOR +02	-4.800	-4.800	+1.400
N-3	POOL LEVEL / FLOOR -03	-18.000	-12.000	+10.040

ICN_Schedule Level Heights - Building LB				
Number	Level description_EBO	Piel (PSL)	NAP	Bottom Piel
L+3	Top floor finish	+14.230	+20.230	+22.180
L+2	Top floor finish	+10.080	+16.080	+18.040
L+1	Top floor finish	+5.040	+11.040	+13.000
L+0	Top floor finish	0.000	+6.000	+7.960
L+0	Top floor finish	-2.000	+3.000	+1.960
L-1	Top floor finish	-3.000	+3.000	+1.960

LEGEND: thermal resistance values of construction elements

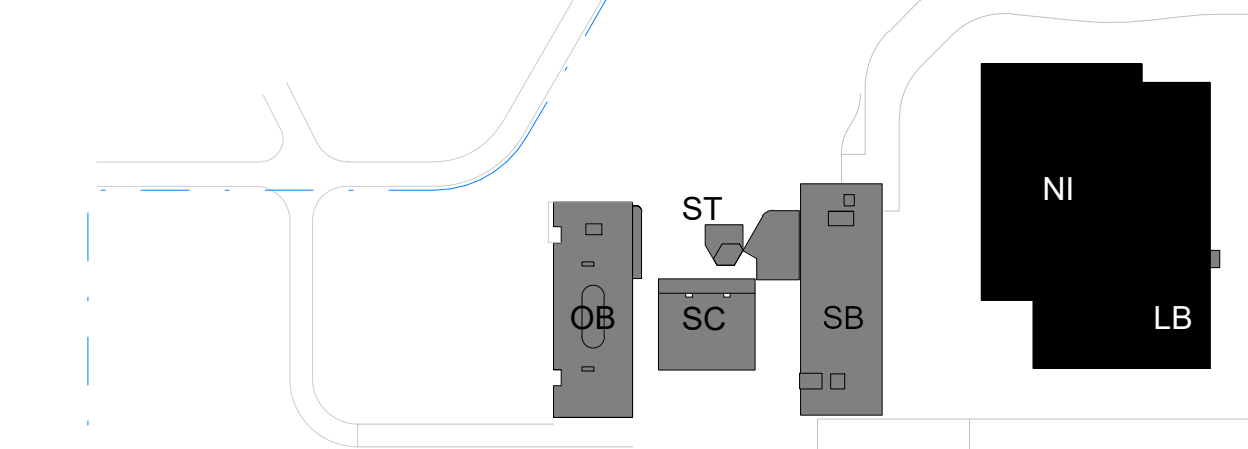
Building element	New construction
Floor above crawl space or directly on soil	$R_e \geq 3.7 \text{ m}^2/\text{KW}$
Floor adjacent to outdoor space	$R_e \geq 6.3 \text{ m}^2/\text{KW}$
Inner wall or floor adjacent to non-conditioned space (only accommodation spaces with continuous temperature difference)	$R_e \geq 4.7 \text{ m}^2/\text{KW}$
Roof	$R_e \geq 6.3 \text{ m}^2/\text{KW}$
Facade (solid)	$R_e \geq 4.7 \text{ m}^2/\text{KW}$
Outer walls under ground level (up to 2.500 mm below the bottom groundfloor)	$R_e \geq 3.7 \text{ m}^2/\text{KW}$
Facade (glazing, window, door)	$U \leq 1.65 \text{ W/m}^2/\text{K}$

( $R_e$  = thermal resistance in  $\text{m}^2/\text{KW}$ ).

#### Application Building Permit

##### Keynote:

LB = Logistics Building  
NI = Nuclear Island  
N1 = Office Building  
SB = Support Building  
SC = Secondary Cooling System Building (=SCSB)  
ST = Storage Tank  
BT = Scope boundary



C	Application Building Permit	24-12-2021	
B	Application Building Permit	25-06-2020	
A	Building Permit issue	15-05-2020	
Rev.	Description	Date	Name

Responsible Dept.	Architect	Created By	Technical Reference	Approved By	Rev.
-------------------	-----------	------------	---------------------	-------------	------

3001 - 3000	Nuclear Island Buildings / Logistic Building
-------------	--

3001 - 3000	Nuclear Island - Civil Elevations
-------------	-----------------------------------

3001 - 3000	North and East
-------------	----------------

Rev.	Document status	Confidentiality	Scale	Issue document	Date of issue	Issued	Drawn
EN	RELEASED	RESTRICTED	1:100	PLS-3205-ICN-NA-ARCH-22-22-305-1	24-12-2021	EN	EN

Posture and time: 09/12/2021 11:02:23 A0:84 1x139:2



## Summary of the Document Signature Procedure: PLLS-3200-2AREIC-034-C

Description	Name	Date
Configuration Manager		12-25-2021
Author		01-13-2022
Reviewed by		01-17-2022
Reviewed by		01-19-2022
Approved by		01-19-2022

Controlled Copy

---

*This document was validated by means of an electronic approval procedure. The procedure can be verified in the Document Management System using the following ID:  
PLLS-3200-2AREIC-034-C(Internal Code: 000009019A)*

---