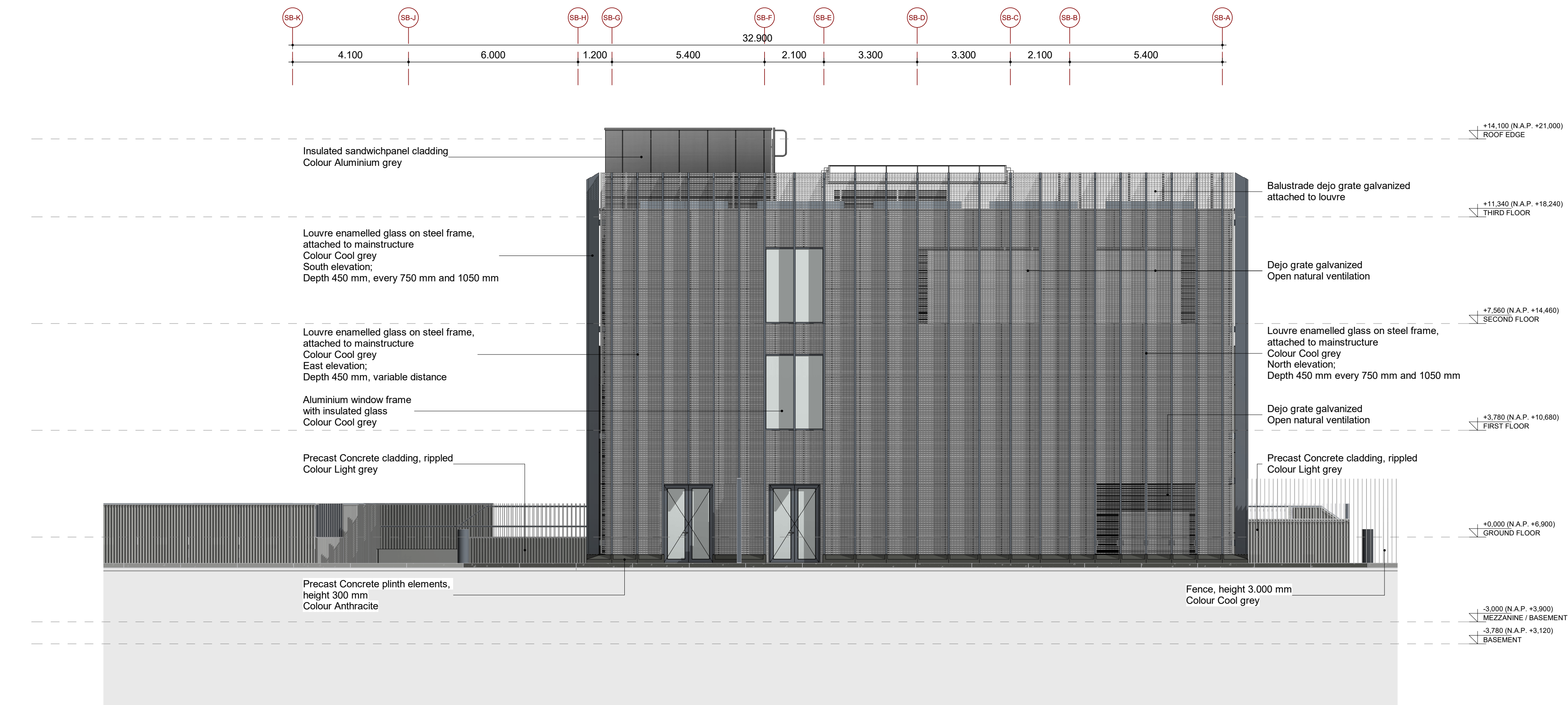


© 2020 ICHOS. All intellectual property rights reserved. This drawing shall not be used in CHOS. The drawing is the property of ICHOS. ICHOS B.V. is a partnership between INW S.E. Hobbie B.V. and ICHOS B.V.

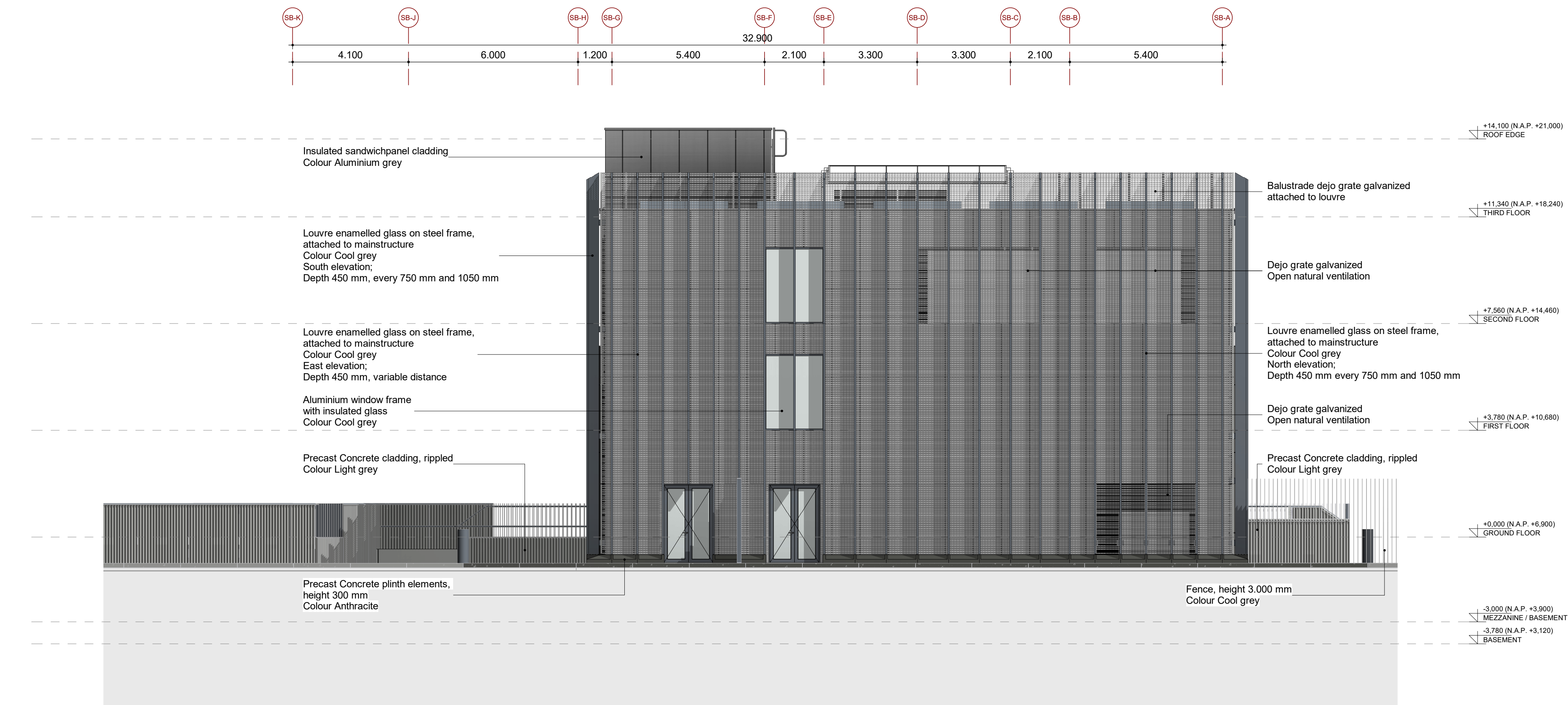
North Elevation

1 : 100



East Elevation

1 : 100



GENERAL NOTES:

- All dimensions (measurements) in millimeters (mm) unless otherwise indicated.
- Height dimensions relative to Finished Ground Floor Level (FGL).
- FGL = +0.000 = **+6.900 N.A.P.** (N.A.P. = Normaal Amsterdams Peil = Reference level).
- Functional concept and occupancy of the building; see PLS-7210-2BRDIC-004-A, paragraph 1.3.
- Building function regulations (Bouwbesluit) and area calculations; see PLS-7210-2BRDIC-004-A, chapter 2.
- For component size and dimensions of main structure and geotechnical advice; see relevant reports / construction drawings. Permissible floor load; see construction documents.
- All roofs should have sufficient overflows or emergency drainage according to manufacturer's specifications.
- Pest protection: The external separation construction has no openings wider than 0.01 m (1 cm).
- Water/moisture-resistance of sanitary rooms; see PLS-7210-2BRDIC-004-A, paragraph 3.1.
- Specification glazing of window frames; see PLS-7210-2BRDIC-004-A, paragraph 3.2.
- Occupancy per room and emergency capacity; see PLS-7210-2BRDIC-004-A, paragraph 3.4.
- Bicycle parking space; see PLS-7210-2BRDIC-004-A, paragraph 3.5.
- BENG calculations; see PLS-7210-2BRDIC-004-A, paragraph 3.6.
- Environmental performance calculation; see PLS-7210-2BRDIC-004-A, paragraph 3.7.
- Installation specifications; see PLS-7210-2BRDIC-004-A, paragraph 3.8.
- Emergency, escape route lighting and fire compartments; see fire safety drawings and PLS-7210-2BRDIC-004-A, paragraph 3.9.
- Checklist for safe maintenance; see PLS-7210-2BRDIC-004-A, paragraph 3.10.
- Accessible shafts will be equipped with grid floors.
- Double doors have one door with a clear opening width of at least 850 mm.
- Specifications on balustrades and handrailing's; see PLS-7210-2BRDIC-004-A, paragraph 3.11.
- Explanation special residential area's; see PLS-7210-2BRDIC-004-A, paragraph 3.12.
- Calculation thermal bridges; see PLS-7210-2BRDIC-004-A, paragraph 3.13.
- All crawl spaces with natural ventilation. Crawl spaces with installations are accessible via floor hatch.
- Openable tilted windows; see PLS-7210-2BRDIC-004-A, paragraph 4.1.
- Thermal boundary; see PLS-7210-2BRDIC-004-A, paragraph 4.2.
- Explanation & detail's accessibility sector; see PLS-7210-2BRDIC-004-A, paragraph 2.4 & chapter 5.

LEGEND: thermal resistance values of construction elements

Building element	New construction
+ Floor above crawl space or directly on soil	$R_c \geq 3,7 \text{ m}^2/\text{K/W}$
+ Floor adjacent to outdoor space	$R_c \geq 6,3 \text{ m}^2/\text{K/W}$
+ Inner wall or floor adjacent to non-conditioned space (only accommodation spaces with continuous temperature difference	$R_c \geq 4,7 \text{ m}^2/\text{K/W}$
+ Roof	$R_c \geq 6,3 \text{ m}^2/\text{K/W}$
+ Facade (solid)	$R_c \geq 4,7 \text{ m}^2/\text{K/W}$
+ Outer walls under ground level	$R_c \geq 3,7 \text{ m}^2/\text{K/W}$
+ Facade (glazing, window, door)	$U \leq 0,90 \text{ W/m}^2\cdot\text{K}$

(R_c = thermal resistance in $\text{m}^2/\text{K/W}$).

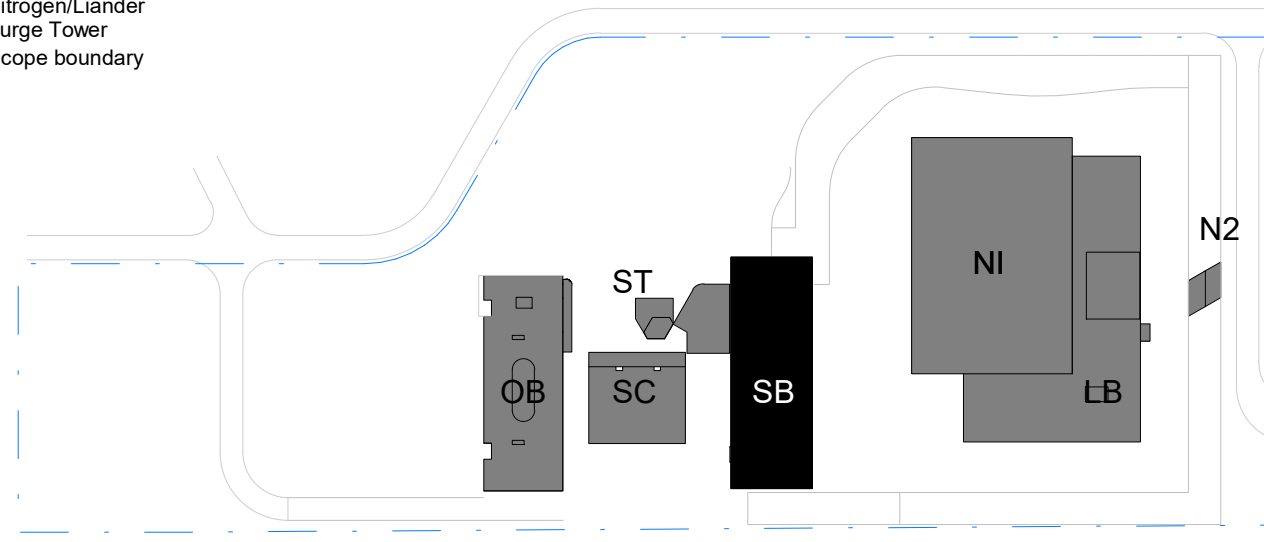
Schedule Level Heights - Support Building

Number	Level Name	Peil (FGL)	N.A.P.
G+14	ROOF EDGE	+14.100	+21.000
G+3	THIRD FLOOR	+11.340	+18.240
G+2	SECOND FLOOR	+7.560	+14.460
G+1	FIRST FLOOR	+3.780	+10.680
G.00	GROUND FLOOR	+0	+6.900
G.M0	MEZZANINE / GROUND FLOOR	-900	+6.000
G.M1	MEZZANINE / BASEMENT	-3.000	+3.900
G-1	BASEMENT	-3.780	+3.120

Application Building Permit

Keyplan:

LB = Logistic Building
NI = Nuclear Island
OB = Office Building
SB = Support Building
SC = Secondary Cooling System Building (=SCSB)
N2 = Nitrogen/Lander
ST = Surge Tower
— = Scope boundary



C	Application Building Permit	24-12-2021	
B	Application Building Permit	25-09-2020	
A	Building Permit Issue	15-05-2020	

Rev.	Description	Date	Name
------	-------------	------	------

Responsible Dept.	Created By	Issued By	Technical Reference	Approved By	Sign (Sign)
Architecture					

PALLAS		ICHOS		3500	
		Support Building - Civil Elevations North and East			
		Number PLLS-3500-2AREIC-006		Rev. C	
		Base document PLLS-3500-ICN-SB-ARCH-ZZ-ZZ-3DS-1		Date of issue 24-12-2021	
		Lang. EN		Sheet 1/1	

Summary of the Document Signature Procedure: PLLS-3500-2AREIC-006-C

Description	Name	Date
Configuration Manager		12-20-2021
Author		12-22-2021
Reviewed by		12-22-2021
Reviewed by		12-22-2021
Approved by		12-22-2021

Controlled Copy

*This document was validated by means of an electronic approval procedure. The procedure can be verified in the Document Management System using the following ID:
PLLS-3500-2AREIC-006-C(Internal Code: 0000090075)*
