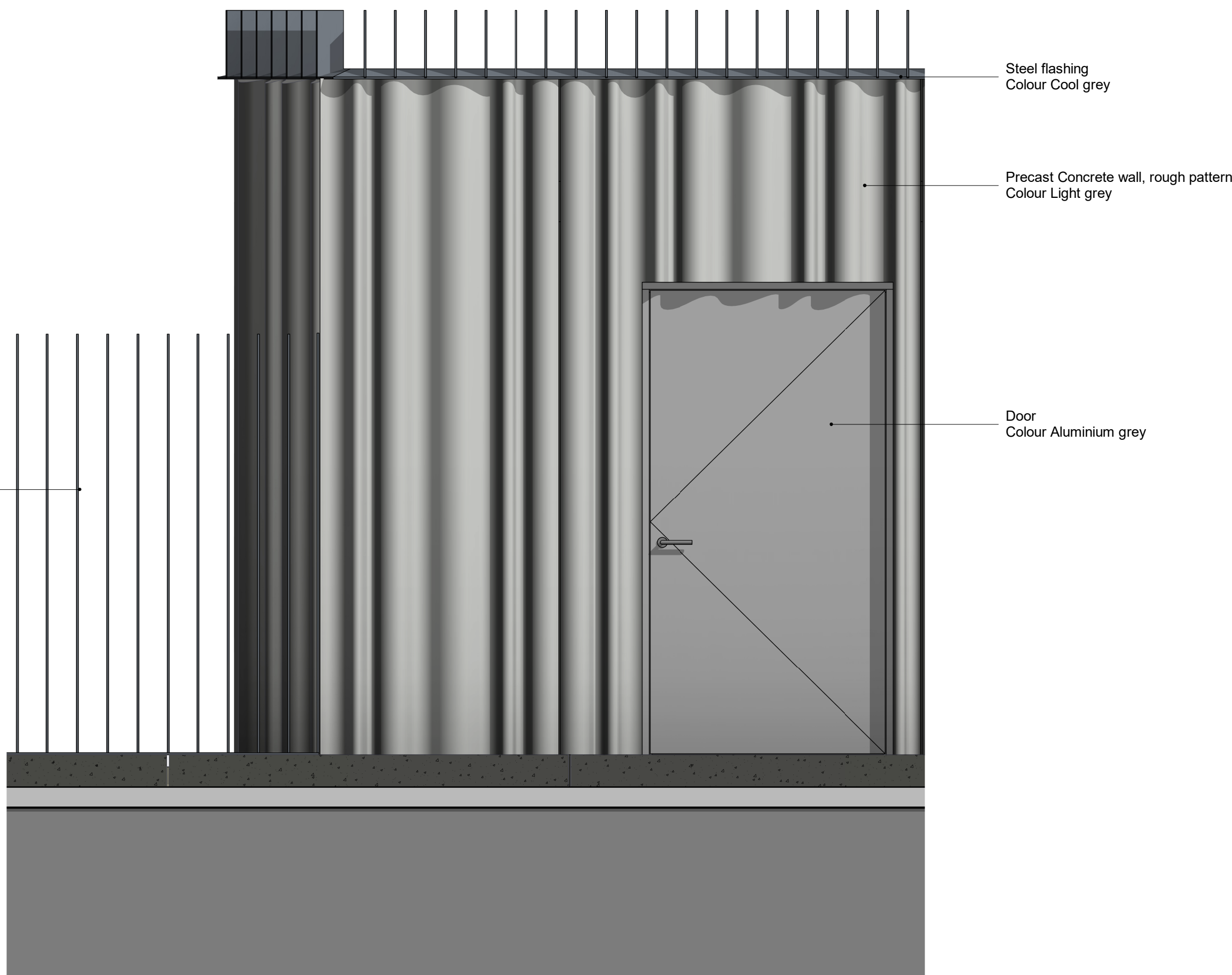
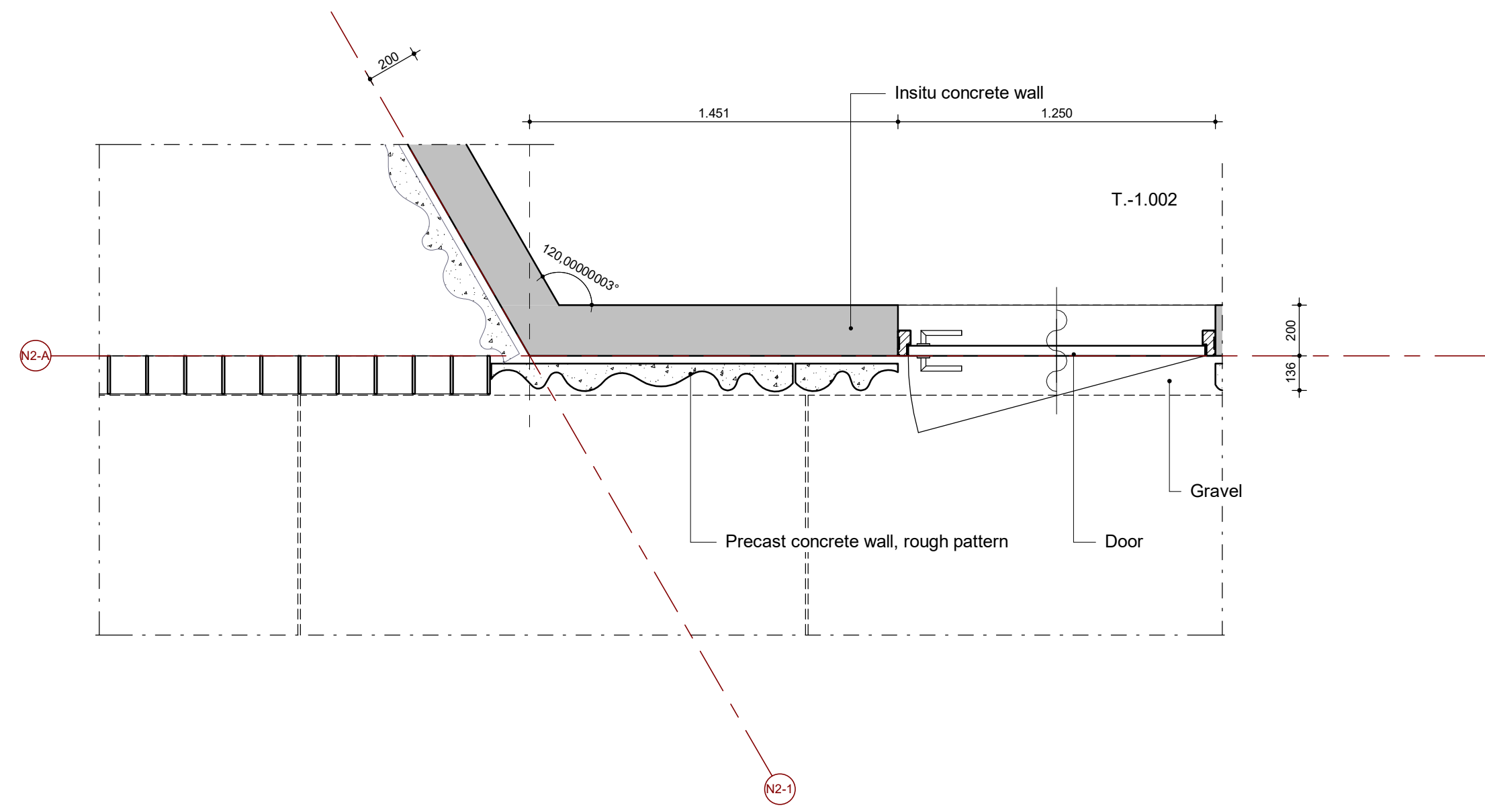


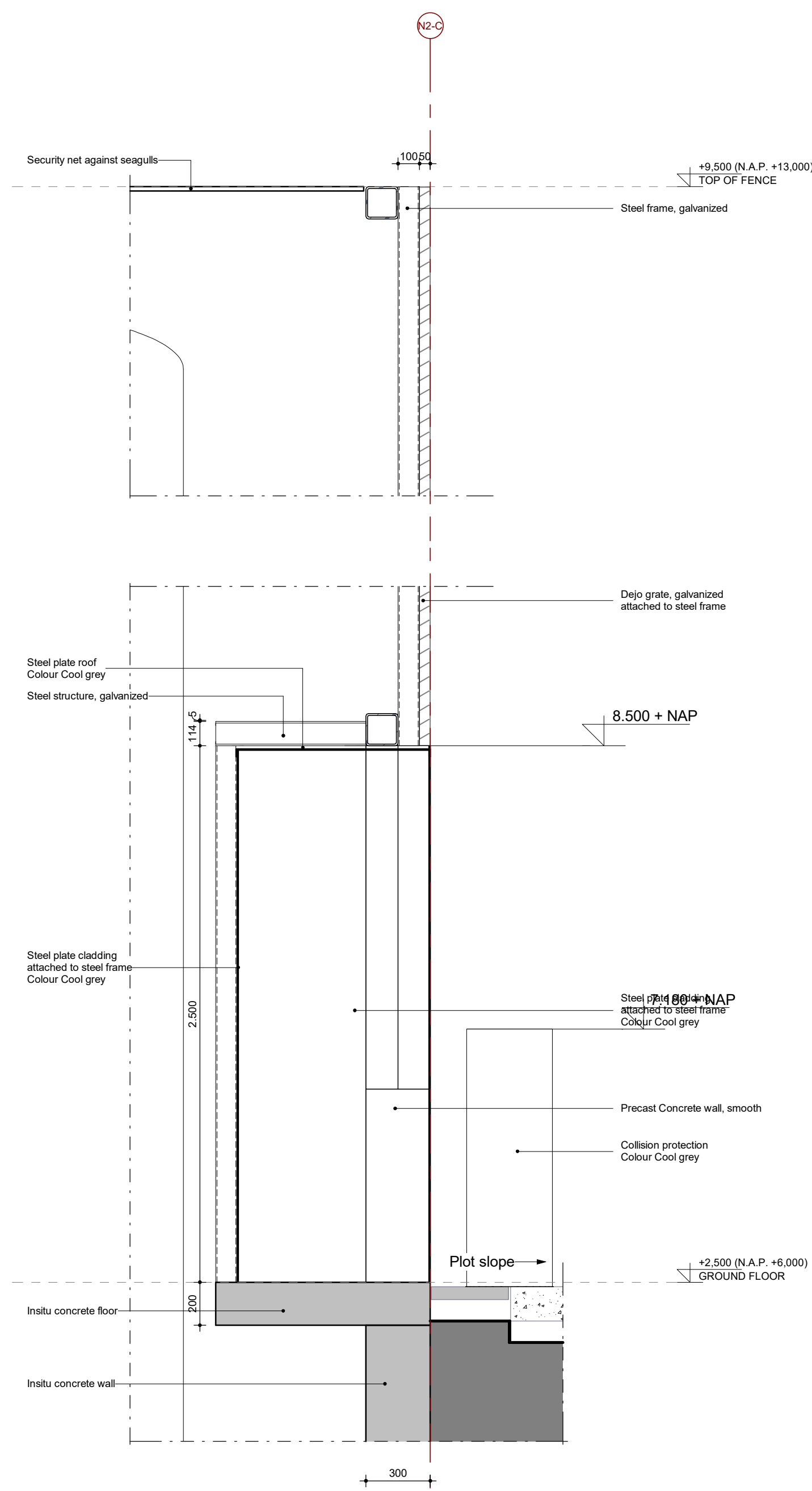
Typical Section - S01  
1 : 20



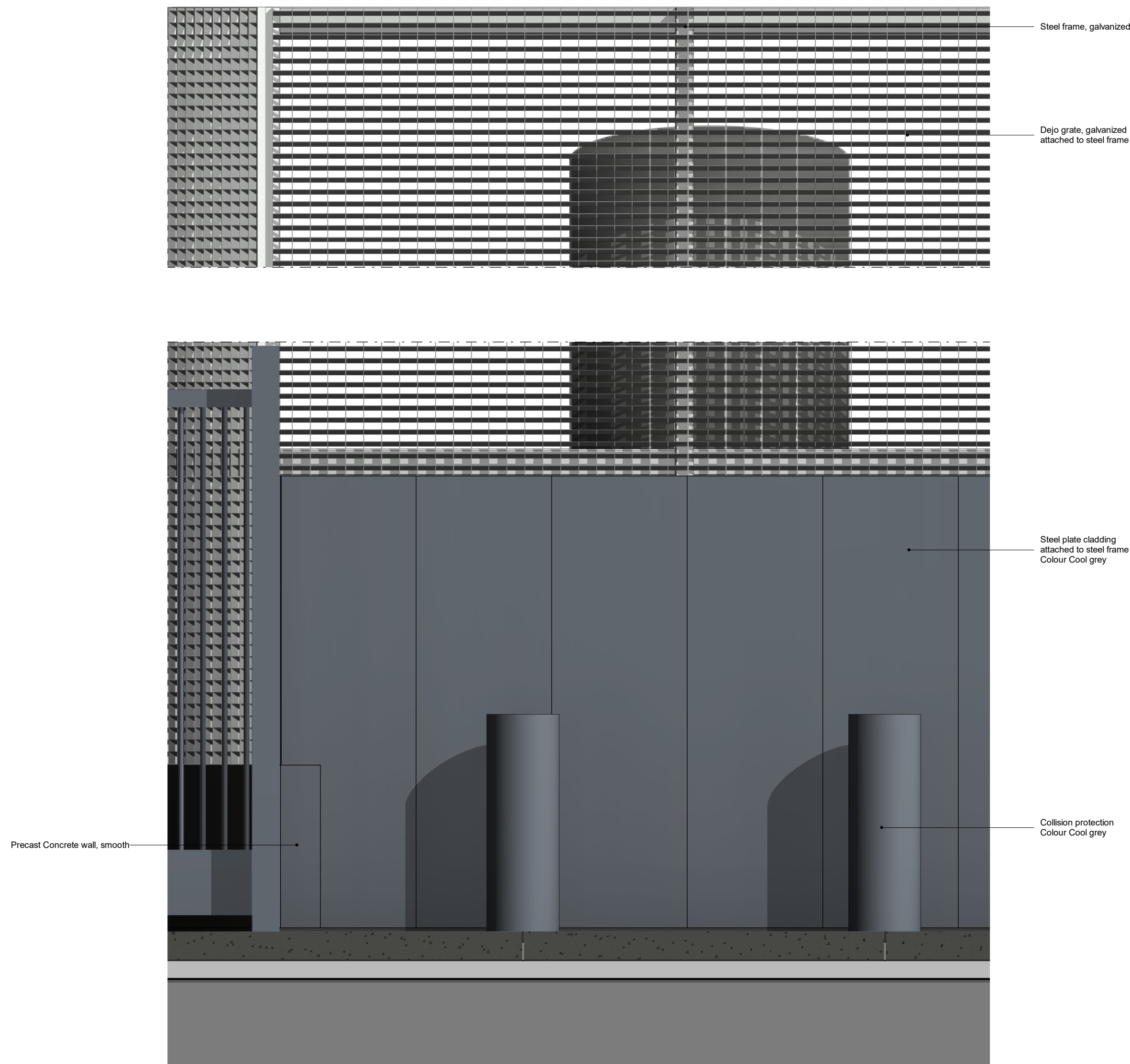
Typical Elevation - E01  
1 : 20



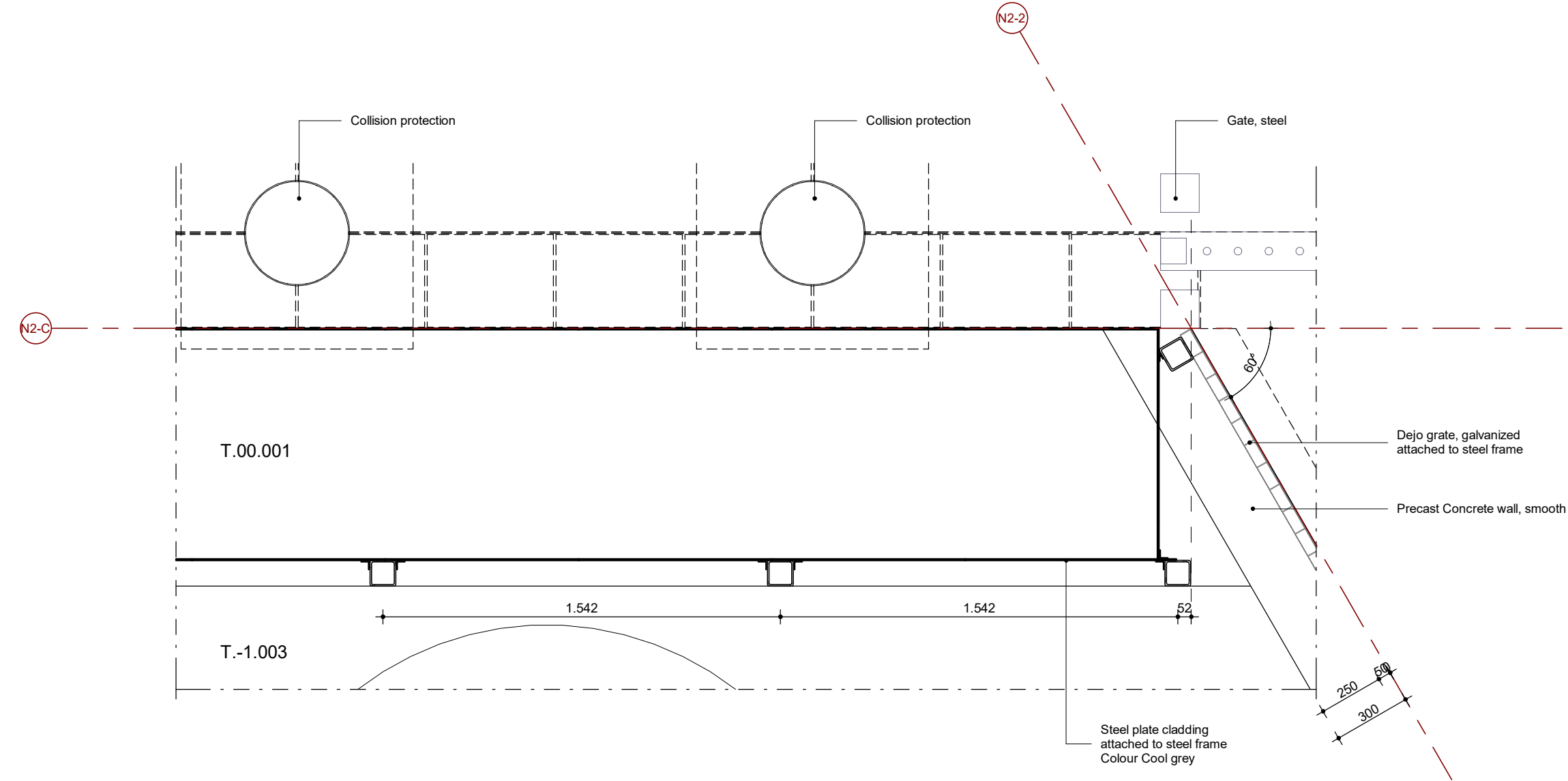
Entrance level - Detail H01  
1 : 20



Typical Section - S02  
1 : 20



Typical Elevation - E02  
1 : 20



Ground floor - Detail H02  
1 : 20

LEGEND:

	= Insitu concrete reinforced, see structure drawings
	= Precast Concrete
	= Calcium silicate wall, non-loadbearing
	= Aerated concrete wall, non-loadbearing
	= Metal-stud wall, non-loadbearing
	= Thermal insulation
	= Glass partition walls
	= Toilet
	= Urinal
	= Basin / Sink
	= Utility sink
	= Shower
	= Level height dimensions, in mm, relative to N.A.P.
	= Clear width / height door frame, in mm
	= Numbers of risers x riser height / tread depth
	= Self closing door
	= 20 min. Fire protection
	= 60 min. Fire protection
	= Main entrance
	= Secondary entrance

NOTE:  
Drawing is fitted with spatial information from other disciplines. Clashes may occur and will be solved in the next phase. For more information on other disciplines, we refer to the appropriate documents.

#### GENERAL NOTES:

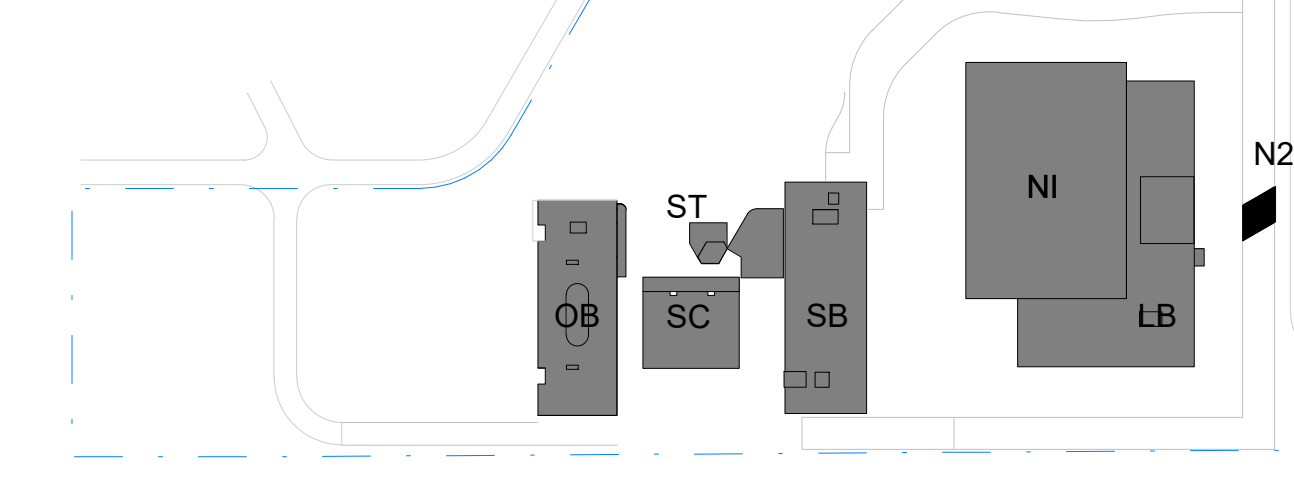
- All dimensions (measurements) in millimeters (mm) unless otherwise indicated.
- Height dimensions relative to Finished Ground floor Level (FGL).
- FGL = +0.000 = +3.900 N.A.P. (N.A.P. = Normal Amsterdam's Pail = Reference level).
- Functional concept and occupancy of the building; see PLS-7210-2BRDIC-004-A, paragraph 1.3.
- Building function regulations (Bouwbesluit) and area calculations; see PLS-7210-2BRDIC-004-A, chapter 2.
- For component size and dimensions of main structure and geotechnical advice; see relevant reports / construction drawings. Permissible floor load; see construction documents.
- Installation specifications; see PLS-7210-2BRDIC-004-A, paragraph 3.8.
- All roofs should have sufficient overflows or emergency drainage according to manufacturer's specifications.
- Pest protection: The external separation construction has no openings wider than 0.01 m (1 cm).
- Water/moisture-resistance of sanitary rooms; see PLS-7210-2BRDIC-004-A, paragraph 3.1.
- Specification glazing of window frames; see PLS-7210-2BRDIC-004-A, paragraph 3.2.
- Occupancy per room and emergency capacity; see PLS-7210-2BRDIC-004-A, paragraph 3.4.
- BENC calculations; see PLS-7210-2BRDIC-004-A, paragraph 3.6.
- Environmental performance calculation; see PLS-7210-2BRDIC-004-A, paragraph 3.7.
- Emergency, escape route lighting and fire compartments; see fire safety drawings and PLS-7210-2BRDIC-004-A, paragraph 3.9.
- Checklist for safe maintenance; see PLS-7210-2BRDIC-004-A, paragraph 3.10.
- Accessible shafts will be equipped with grid floors.
- Double doors have one door with a clear opening width of at least 850 mm.
- Specifications on balustrades and handrails; see PLS-7210-2BRDIC-004-A, paragraph 3.11.
- Explanation special residential area's; see PLS-7210-2BRDIC-004-A, paragraph 3.12.
- Calculation thermal bridges; see PLS-7210-2BRDIC-004-A, paragraph 3.13.
- All crawl spaces with natural ventilation. Crawl spaces with installations are accessible via floor hatch.
- Openable tilted windows; see PLS-7210-2BRDIC-004-A, paragraph 4.1.
- Thermal boundary; see PLS-7210-2BRDIC-004-A, paragraph 4.2.
- Explanation & detail's accessibility sector; see PLS-7210-2BRDIC-004-A, paragraph 2.4 & chapter 5.

Schedule Level Heights - Nitrogen/Liander				
Number	Level Name	Pail (FGL)	NAP	
T+2	TOP OF FENCE	+9.500	+13.000	
T+1	GROUND FLOOR	+2.500	+6.000	
T.00	ENTRANCE	.000	+3.900	
T.-01	BASEMENT	-1.500	+2.900	
NAP	DUTCH ORDNANCE DATUM	-3.500		

#### Application Building Permit

##### Keyplan:

LB = Logistic Building  
NI = Nuclear Island  
OB = Office Building  
SB = Support Building  
SC = Secondary Cooling System Building (=SCSB)  
N2 = Nitrogen/Liander  
ST = Storage Tower  
= Scope boundary



C	Application Building Permit	24-12-2021		
B	Application Building Permit	25-09-2020		
A	Building Permit Issue	15-05-2020		
Rev.	Description	Date	Name	

Responsible Dept.	Created By	Issued By	Technical Reference	Approved By	Scale
Architecture			3900		
Nitrogen/Liander Building - Civil Exterior Details Elevation Overview 01					
Document Status	Confidentially RESTRICTED	Scale	1 : 20	Issue document	PLS-3900-2AREIC-007
Released		Scale	1 : 20	Issue of issue	PLS-3900-ICN-AQ-ARCH-22-ZZ-305-1
Rev.	C	Lang	EN	Sheet	1/1

## Summary of the Document Signature Procedure: PLLS-3900-2AREIC-007-C

Description	Name	Date
Configuration Manager		12-20-2021
Author		12-22-2021
Reviewed by		12-22-2021
Reviewed by		12-22-2021
Approved by		12-22-2021

Controlled Copy

---

*This document was validated by means of an electronic approval procedure. The procedure can be verified in the Document Management System using the following ID:  
PLLS-3900-2AREIC-007-C(Internal Code: 0000090061)*

---