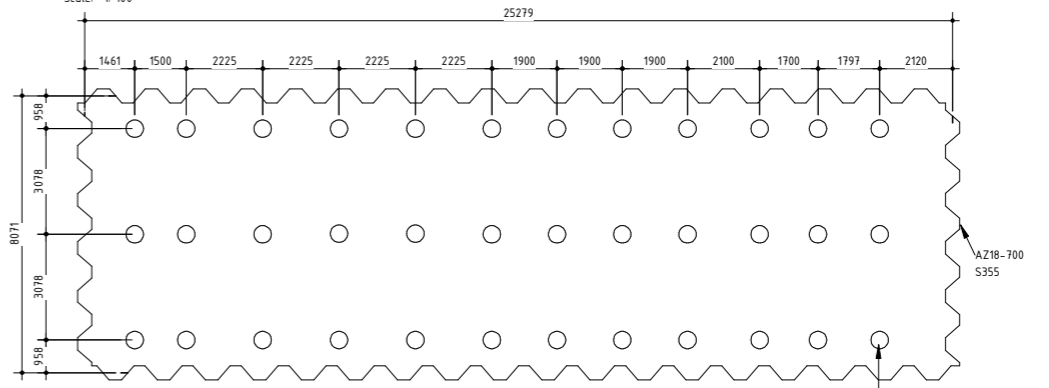


Top View-Basement

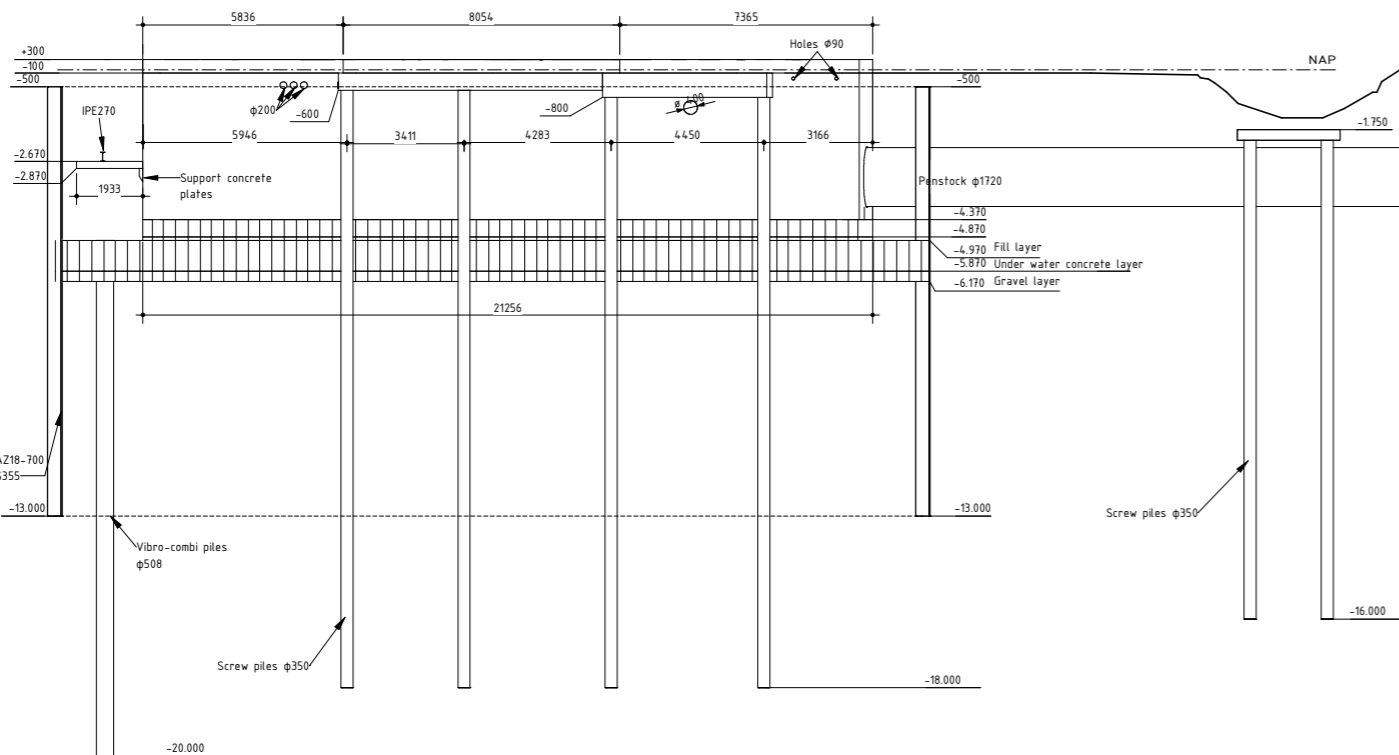
scale: 1:100



Top View-Foundation Ø508

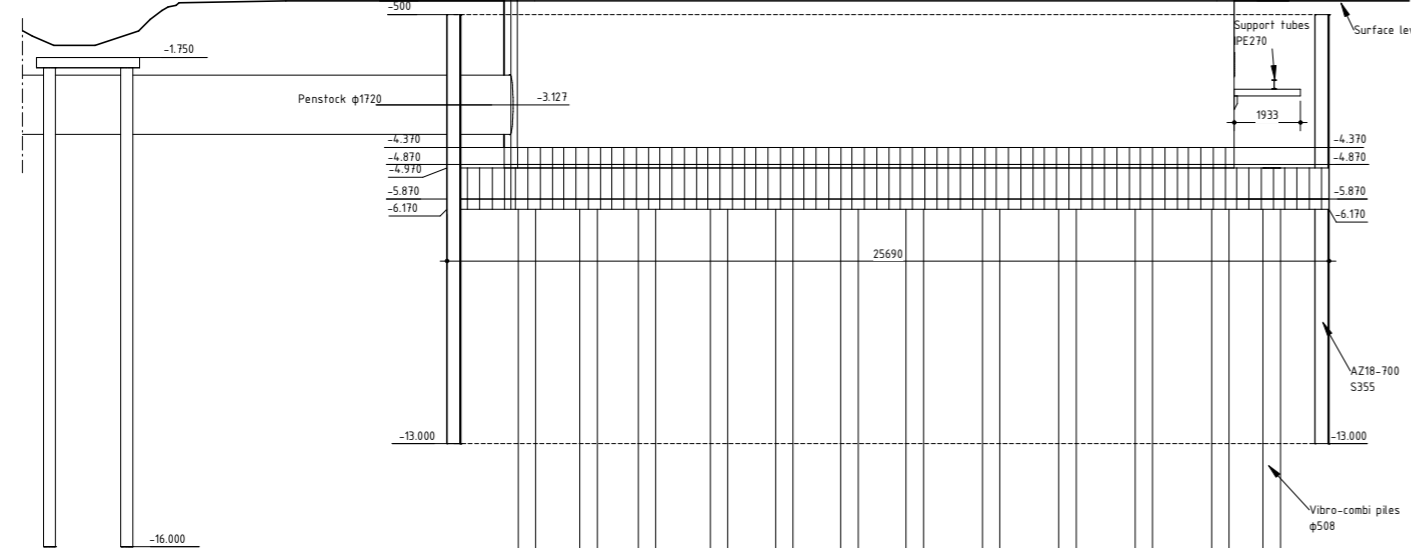
scale: 1:100

Front View  
Top view  
scale: 1:100



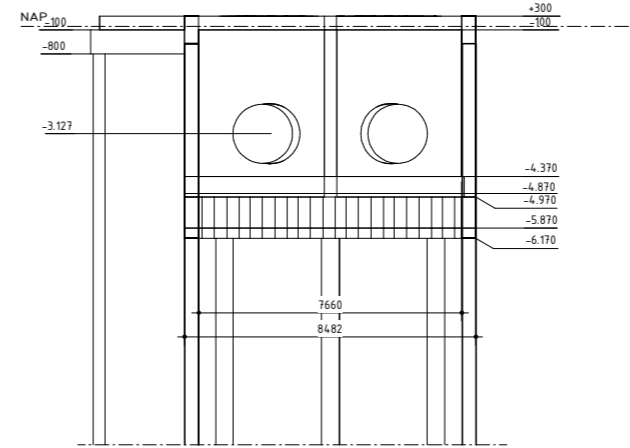
Front View

scale: 1:100



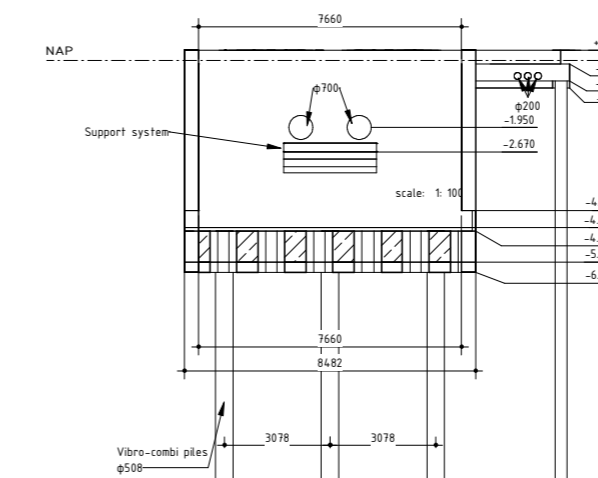
Back View

scale: 1:100



Side View-Right

scale: 1:100



Side View-Left

scale: 1:100



Remarks:

- This is the preliminary design of the building pit, the contractor should make the final design, and detail the building pit.
- Dimensions in millimeters, unless stated otherwise.
- Height measurements in meters relative to N.A.P., unless stated otherwise.
- Coordinates in meters relative to R.D. (Rijksdriehoekstelsel).
- Angle measurements in 360 degrees, unless stated otherwise.
- Specific information regarding the design is described in report: PAL\_CWSR-ARC-INT-ZZ-REP-CE-PD-0100

A Preliminary Design				18-10-2021
Revision	Purpose of Issue	Checked by	Approved by	Date
<b>Client</b> 				Contact
<b>Originator</b> 				Contact
<b>Project</b> <b>Canal Water Supply and Removal (CWSR)</b>				Contact
Projectnumber	: C05011.000642-Pallas werkpakketten 2020		Security Category:	
Phase	: PD		AS1- Sensitive	
Subject	<b>Intake Building structure Top View and Side View</b>			
Scale	: 1:100	Sheet size	: A1	Purpose of Issue:
Contractnumber	: 20150612-001   CA91		Sheet	: 1 of 1
Drawingnumber	: PAL-CWSR-ARC-INT-ZZ-DRW-CE-PD-0104			Revision:
				<b>A</b>